

COMMODITY SHRIMP



Ocean Jewel™
Pacific White Shrimp



TM
MC

shrimp solutions to delight your customers

SUSTAINABILITY COMMITMENTS

Our significant presence in the seafood market means that seafood sustainability is an important consideration for our business.

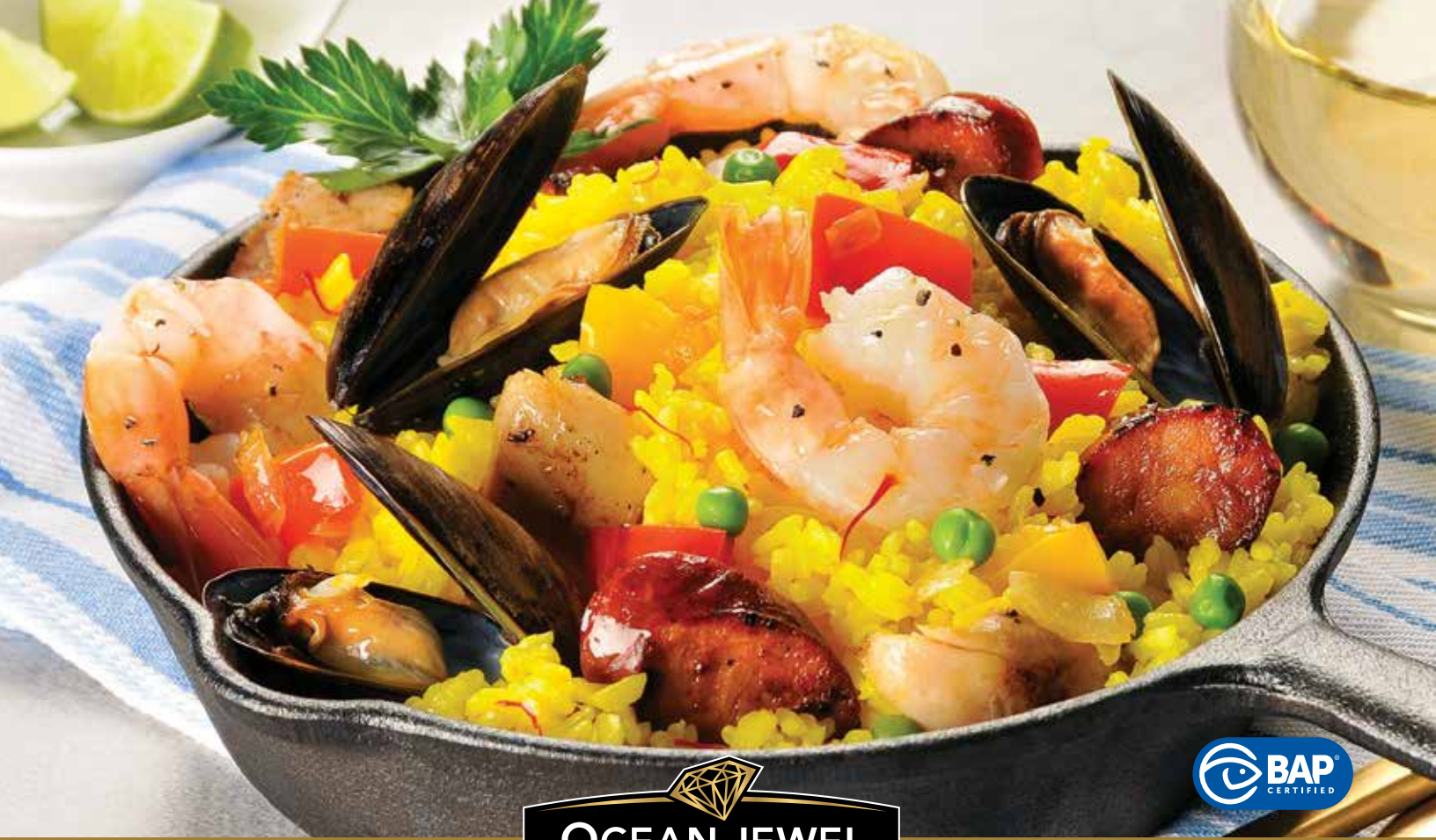
We do not sell wild-caught seafood species identified as endangered in the International Union for Conservation of Nature's Red List of Threatened Species and do not permit the purchase of seafood acquired through illegal, unreported or unregulated catches. We are working towards the goal of 100% traceability on all seafood products.

We look to partner with suppliers who share our view and catch or farm seafood in a sustainable and responsible manner. We offer a wide variety of products that have been certified by third-party organizations working on advancing sustainable and responsible seafood practices, including MSC-certified wild-caught seafood products and BAP or ASC-certified farmed seafood products. We also purchase seafood originating from Fishery Improvement Projects (FIPs). FIPs are multi-stakeholder initiatives that aim to help fisheries work towards sustainable and responsible seafood practices.

Within our Ocean Jewel brand, we are committed to sourcing third party certified seafood products or products purchased via a FIP, wherever commercially available. We measure the percentage of certification for these products to monitor our performance against these commitments. In our last fiscal year ended March 31, 2024, 63% of our Ocean Jewel branded products (by dollar value) had either an MSC, ASC or BAP certification.

We are committed to working proactively with our customers, suppliers, industry experts and rating agencies with the goal of increasing the percentage of third-party certified products sold through our Ocean Jewel portfolio.





Pacific White Shrimp - Raw, P&D Tail-On

Ocean Jewel™ Raw Pacific Tail-On White Shrimp™ are peeled and deveined and available in a wide variety of sizes making it easy to add to your favourite recipes. Elevate your menu by adding shrimp.

- FEATURES:**
- An excellent source of protein
 - Mild, sweet flavour and firm texture

CHEF'S TIP: Tail-On shrimp makes your dishes more attractive, adds flavour and makes the shrimp look bigger vs. Tail-Off.



| Nutrition Facts | |
|---|---|
| Valeur nutritive | |
| Per 100 g pour 100 g | |
| Calories 70 | |
| Fat / Lipides 1 g | % Daily Value* % valeur quotidienne* 1 % |
| Saturated / saturés 0 g + Trans / trans 0 g | 0 % |
| Carbohydrate / Glucides 1 g | |
| Fibre / Fibres 0 g | 0 % |
| Sugars / Sucres 0 g | 0 % |
| Protein / Protéines 14 g | |
| Cholesterol / Cholestérol 128 mg | |
| Sodium 540 mg | 23 % |
| Potassium 125 mg | 3 % |
| Calcium 50 mg | 4 % |
| Iron / Fer 0.2 mg | 1 % |
| * 5% or less is a little, 15% or more is a lot * 5% ou moins c'est peu, 15% ou plus c'est beaucoup | |

| Code | SCC Code | Description | Count/Size | Origin | Brand | Pack |
|---------|----------------|--|------------|---------|-------------|----------|
| SH02856 | 30059371810146 | Raw, P&D, Tail-On White Shrimp, IQF, BAP | 13-15 ct | Various | Ocean Jewel | 5 x 2 lb |
| SH01996 | 30059371784430 | Raw, P&D, Tail-On White Shrimp, IQF, BAP | 16-20 ct | Various | Ocean Jewel | 5 x 2 lb |
| SH00987 | 30059371404826 | Raw, P&D, Tail-On White Shrimp, IQF, BAP | 21-25 ct | Various | Ocean Jewel | 5 x 2 lb |
| SH01535 | 30059371771690 | Raw, P&D, Tail-On White Shrimp, IQF, BAP | 26-30 ct | Various | Ocean Jewel | 5 x 2 lb |
| SH01267 | 30059371771980 | Raw, P&D, Tail-On White Shrimp, IQF, BAP | 31-40 ct | Various | Ocean Jewel | 5 x 2 lb |
| SH01534 | 30059371771706 | Raw, P&D, Tail-On White Shrimp, IQF, BAP | 41-50 ct | Various | Ocean Jewel | 5 x 2 lb |



Pacific White Shrimp - Raw, P&D Tail-Off

Ocean Jewel™ Raw Pacific Tail-Off White Shrimp are peeled and deveined and available in a wide variety of sizes to suit your menu. Consider adding these delicious shrimp to your signature seafood dishes.

- FEATURES:**
- An excellent source of protein
 - Mild, sweet flavour and firm texture

CHEF'S TIP: Ideal for pastas, stir fries, and add-on skewers. For delicious shrimp tacos try tossing them in Buffalo wing sauce with zesty blue cheese dressing.



| Nutrition Facts | | Valeur nutritive | |
|---|--|-----------------------|--|
| Per 100 g | | | |
| pour 100 g | | | |
| Calories 70 | | % Daily Value* | |
| Fat / Lipides 1 g | | % valeur quotidienne* | |
| Saturated / saturés 0 g | | 1 % | |
| + Trans / trans 0 g | | 0 % | |
| Carbohydrate / Glucides 1 g | | | |
| Fibre / Fibres 0 g | | 0 % | |
| Sugars / Sucres 0 g | | 0 % | |
| Protein / Protéines 14 g | | | |
| Cholesterol / Cholestérol 128 mg | | | |
| Sodium 540 mg | | 23 % | |
| Potassium 125 mg | | 3 % | |
| Calcium 50 mg | | 4 % | |
| Iron / Fer 0.2 mg | | 1 % | |
| * 5% or less is a little, 15% or more is a lot | | | |
| * 5% ou moins c'est peu, 15% ou plus c'est beaucoup | | | |

| Code | SCC Code | Description | Count/Size | Origin | Brand | Pack |
|---------|----------------|--|------------|---------|-------------|-----------|
| SH02104 | 30059371786540 | Raw, P&D, Tail-Off White Shrimp, IQF, BAP | 21-25 ct | Various | Ocean Jewel | 5 x 2 lb |
| SH01211 | 30059371419578 | Raw, P&D, Tail-Off White Shrimp, IQF, BAP | 31-40 ct | Various | Ocean Jewel | 5 x 2 lb |
| SH02125 | 30059371787110 | Raw, P&D, Tail-Off White Shrimp, IQF, BAP | 41-50 ct | Various | Ocean Jewel | 5 x 2 lb |
| SH00307 | 30059371419691 | Raw, P&D, Tail-Off White Shrimp (Bistro), IQF, BAP | 51-60 ct | Various | Ocean Jewel | 10 x 2 lb |
| SH00465 | 30059371771515 | Raw, P&D, Tail-Off White Shrimp (Bistro), IQF, BAP | 90-130 ct | Various | Ocean Jewel | 5 x 2 lb |



Pacific White Shrimp - Cooked, P&D Tail-On

Ocean Jewel™ Cooked Pacific White Shrimp are available in multiple sizes for outstanding menu versatility and to meet your food cost parameters. They provide a delicious, time-saving and cost-effective solution.

- FEATURES:**
- An excellent source of protein
 - Mild, sweet flavour and firm texture

CHEF'S TIP: Elevate your Shrimp Cocktail experience by offering alternative dips such as mango salsa, Hollandaise with dill or a spicy miso sauce.



| Nutrition Facts Valeur nutritive | |
|---|---|
| Per 100 g pour 100 g | |
| Calories 77 | <small>% Daily Value* % valeur quotidienne*</small> |
| Fat / Lipides 1 g | 1 % |
| Saturated / saturés 0.5 g | 3 % |
| + Trans / trans 0 g | |
| Carbohydrate / Glucides 0 g | |
| Fibre / Fibres 0 g | 0 % |
| Sugars / Sucres 0 g | 0 % |
| Protein / Protéines 18 g | |
| Cholesterol / Cholestérol 170 mg | |
| Sodium 517 mg | 23 % |
| Potassium 85 mg | 2 % |
| Calcium 94 mg | 8 % |
| Iron / Fer 0.4 mg | 3 % |
| <small>*5% or less is a little, 15% or more is a lot *5% ou moins c'est peu, 15% ou plus c'est beaucoup</small> | |

| Code | SCC Code | Description | Count/Size | Origin | Brand | Pack |
|---------|----------------|---|------------|---------|-------------|----------|
| SH01698 | 30059371777081 | Cooked, P&D, Tail-On White Shrimp, IQF, BAP | 16-20 ct | Various | Ocean Jewel | 5 x 2 lb |
| SH01570 | 30059371772390 | Cooked, P&D, Tail-On White Shrimp, IQF, BAP | 21-25 ct | Various | Ocean Jewel | 5 x 2 lb |
| SH01001 | 30059371772406 | Cooked, P&D, Tail-On White Shrimp, IQF, BAP | 26-30 ct | Various | Ocean Jewel | 5 x 2 lb |
| SH01075 | 30059371772413 | Cooked, P&D, Tail-On White Shrimp, IQF, BAP | 31-40 ct | Various | Ocean Jewel | 5 x 2 lb |
| SH01228 | 30059371414672 | Cooked, P&D, Tail-On White Shrimp, IQF, BAP | 41-50 ct | Various | Ocean Jewel | 5 x 2 lb |



Pacific White Shrimp - EZ Peel, Deveined, Tail-On

Ocean Jewel™ Pacific White Raw EZ Peel Shrimp are split and deveined, with shell-on and available in many sizes.

- FEATURES:**
- Very sweet in taste, with a tender bite
 - The raw product cooks in about half the time vs. traditional species

CHEF'S TIP: Cooking shrimp in the shell provides optimum flavour. The raw selections are also idea for grilling.

| Nutrition Facts Valeur nutritive | |
|---|---|
| Per 100 g pour 100 g | |
| Calories 120 | % Daily Value* % valeur quotidienne* |
| Fat / Lipides 1.5 g | 2 % |
| Saturated / saturés 0.5 g | 3 % |
| + Trans / trans 0 g | |
| Carbohydrate / Glucides 2 g | |
| Fibre / Fibres 0 g | 0 % |
| Sugars / Sucres 0 g | 0 % |
| Protein / Protéines 23 g | |
| Cholesterol / Cholestérol 210 mg | |
| Sodium 520 mg | 23 % |
| Potassium 175 mg | 4 % |
| Calcium 100 mg | 8 % |
| Iron / Fer 0.3 mg | 2 % |

* 5% or less is a little, 15% or more is a lot
* 5% ou moins c'est peu, 15% ou plus c'est beaucoup



| Code | SCC Code | Description | Count/Size | Origin | Brand | Pack |
|---------|----------------|--|------------|---------|-------------|----------|
| SH01631 | 30059371774790 | Raw, EZ Peel, Deveined, Tail-On White Shrimp, IQF, BAP | 26-30 ct | Various | Ocean Jewel | 5 x 2 lb |



COMMODITY SHRIMP

| Code | SCC Code | Description | Count/Size | Origin | Brand | Pack |
|---|----------------|--|------------|---------|-------------|-----------|
| Pacific White Shrimp - Raw, Peeled & Deveined, Tail-On - Thailand/Indo/China/India/Vietnam | | | | | | |
| SH02856 | 30059371810146 | Raw, P&D, Tail-On White Shrimp, IQF, BAP | 13-15 ct | Various | Ocean Jewel | 5 x 2 lb |
| SH01996 | 30059371784430 | Raw, P&D, Tail-On White Shrimp, IQF, BAP | 16-20 ct | Various | Ocean Jewel | 5 x 2 lb |
| SH00987 | 30059371404826 | Raw, P&D, Tail-On White Shrimp, IQF, BAP | 21-25 ct | Various | Ocean Jewel | 5 x 2 lb |
| SH01535 | 30059371771690 | Raw, P&D, Tail-On White Shrimp, IQF, BAP | 26-30 ct | Various | Ocean Jewel | 5 x 2 lb |
| SH01267 | 30059371771980 | Raw, P&D, Tail-On White Shrimp, IQF, BAP | 31-40 ct | Various | Ocean Jewel | 5 x 2 lb |
| SH01534 | 30059371771706 | Raw, P&D, Tail-On White Shrimp, IQF, BAP | 41-50 ct | Various | Ocean Jewel | 5 x 2 lb |
| Pacific White Shrimp - Raw, P&D Tail-Off - Thailand/Indo/China/India | | | | | | |
| SH02104 | 30059371786540 | Raw, P&D, Tail-Off White Shrimp, IQF, BAP | 21-25 ct | Various | Ocean Jewel | 5 x 2 lb |
| SH01211 | 30059371419578 | Raw, P&D, Tail-Off White Shrimp, IQF, BAP | 31-40 ct | Various | Ocean Jewel | 5 x 2 lb |
| SH02125 | 30059371787110 | Raw, P&D, Tail-Off White Shrimp, IQF, BAP | 41-50 ct | Various | Ocean Jewel | 5 x 2 lb |
| SH00307 | 30059371419691 | Raw, P&D, Tail-Off White Shrimp (Bistro), IQF, BAP | 51-60 ct | Various | Ocean Jewel | 10 x 2 lb |
| SH00465 | 30059371771515 | Raw, P&D, Tail-Off White Shrimp (Bistro), IQF, BAP | 90-130 ct | Various | Ocean Jewel | 5 x 2 lb |
| Pacific White Shrimp - Cooked, P&D Tail-On - Thailand/Indo/China/India | | | | | | |
| SH01698 | 30059371777081 | Cooked, P&D, Tail-On White Shrimp, IQF, BAP | 16-20 ct | Various | Ocean Jewel | 5 x 2 lb |
| SH01570 | 30059371772390 | Cooked, P&D, Tail-On White Shrimp, IQF, BAP | 21-25 ct | Various | Ocean Jewel | 5 x 2 lb |
| SH01001 | 30059371772406 | Cooked, P&D, Tail-On White Shrimp, IQF, BAP | 26-30 ct | Various | Ocean Jewel | 5 x 2 lb |
| SH01075 | 30059371772413 | Cooked, P&D, Tail-On White Shrimp, IQF, BAP | 31-40 ct | Various | Ocean Jewel | 5 x 2 lb |
| SH01228 | 30059371414672 | Cooked, P&D, Tail-On White Shrimp, IQF, BAP | 41-50 ct | Various | Ocean Jewel | 5 x 2 lb |
| Pacific White Shrimp - Raw, EZ Peel | | | | | | |
| SH01631 | 30059371774790 | Raw, EZ Peel, Deveined, Tail-On White Shrimp, IQF, BAP | 26-30 ct | Various | Ocean Jewel | 5 x 2 lb |

IQF - Individually Quick Frozen, **ASC** - Aquaculture Stewardship Council, **BAP** - Best Aquaculture Practices certification, **OW** - Ocean Wise

*Some items may not be available in all regions.



Let's talk about growing your business!

Head Office: 905-792-9700

exportpackers.com/foodservice



A Proudly Canadian Company