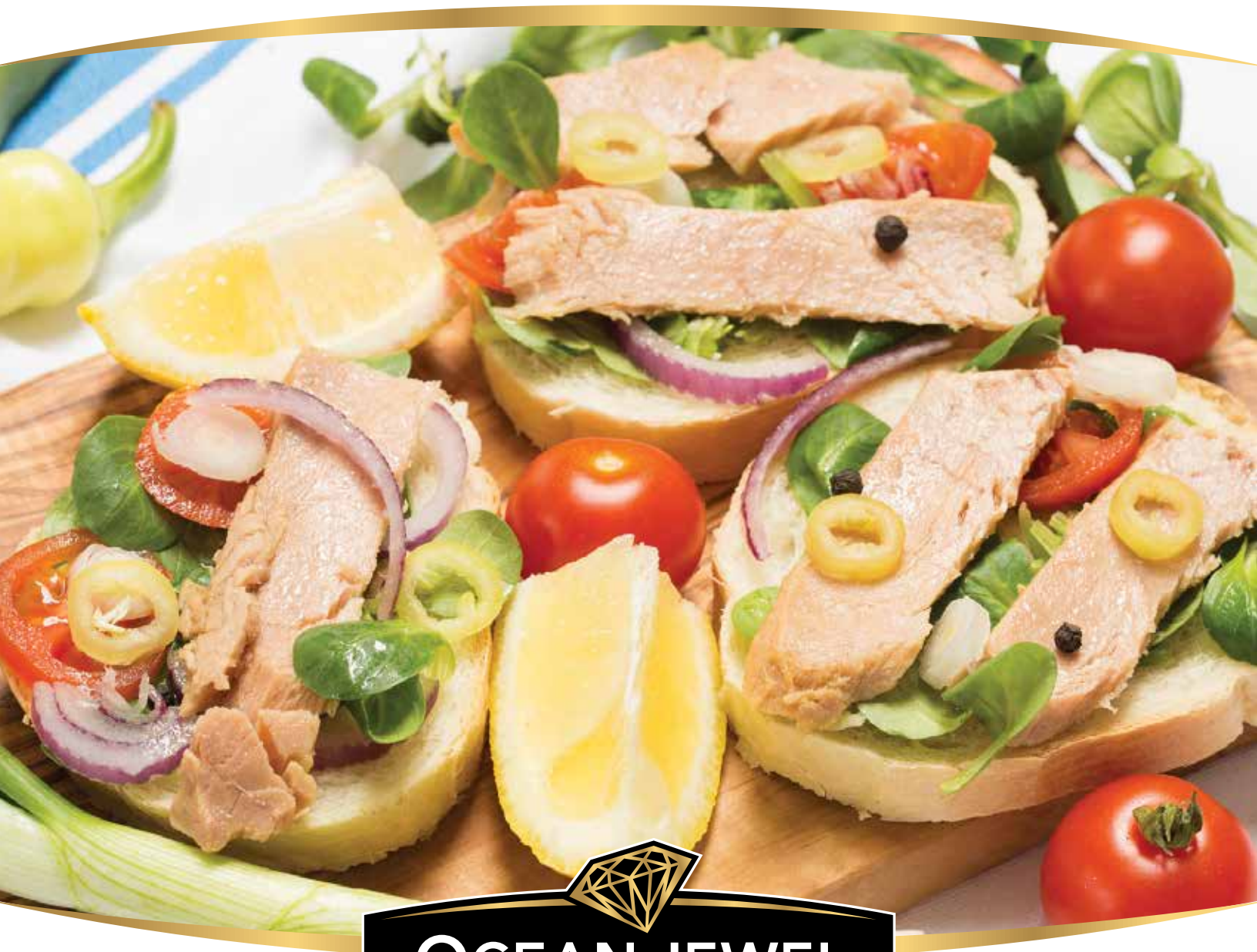


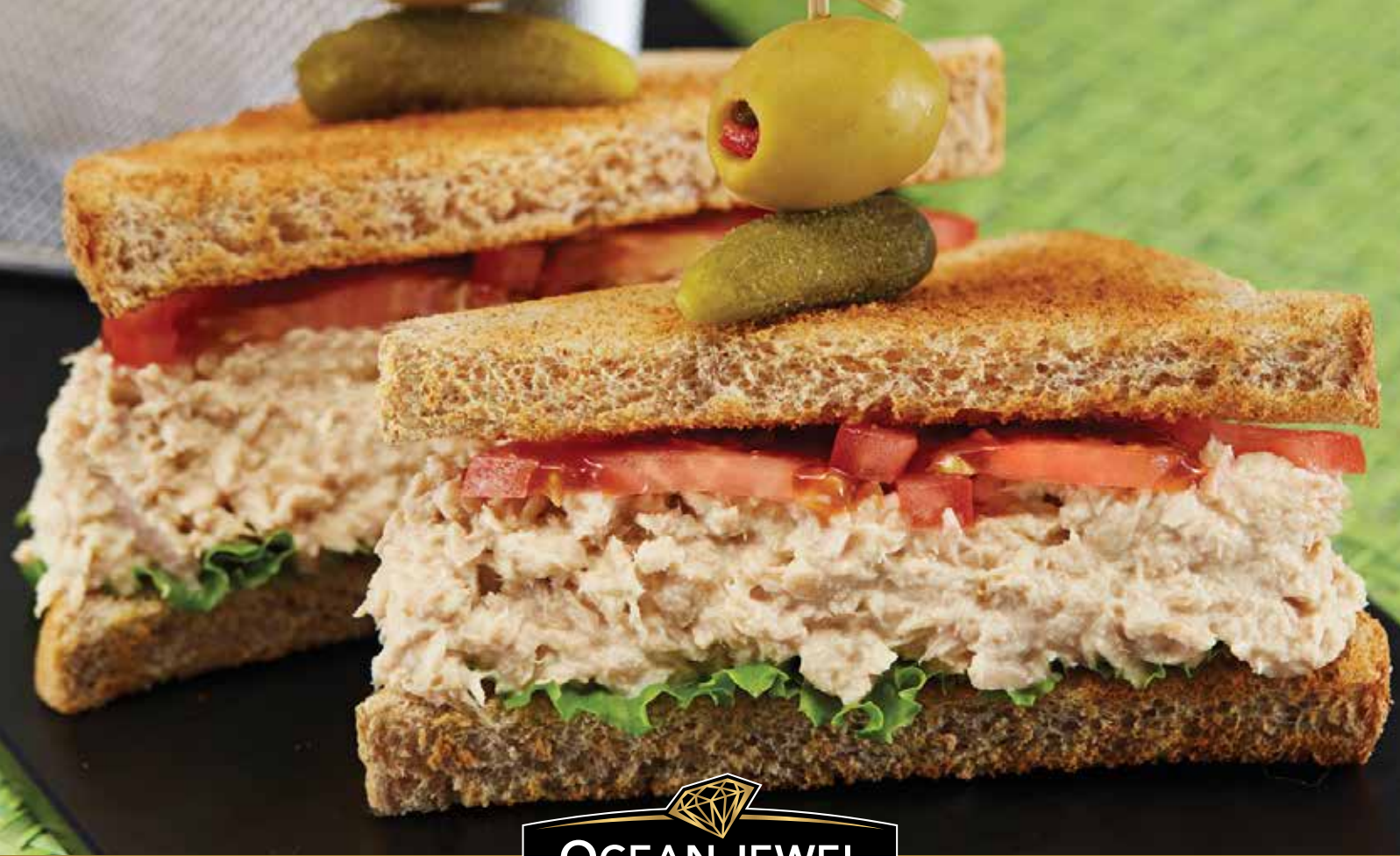
# POUCHPAK™ & CANNED FISH



TM  
MC

versatile and convenient protein options ideal for foodservice





# PouchPak™ Fish

**Ocean Jewel™** PouchPak Salmon and Tuna were designed with the professional foodservice operator in mind. We deliver cost savings from a no-drain package, better flavour and improved food safety versus canned fish.

- HIGHLIGHTS:**
- Cooked in vegetable broth for added moisture and flavour
  - Fully consumable with no skin or bones
  - No soy, hydrolyzed vegetable protein or fillers

**CHEF'S TIP:** Simply tear at the convenient notch and empty contents into a bowl with no draining required.



Nutrition Facts		Valeur nutritive	
Per 1/3 pouch (55 g)		pour 1/3 sachet (55 g)	
<b>Calories 70</b>			
Fat / Lipides 0.5 g	1 %	Saturated / saturés 0 g	0 %
+ Trans / trans 0 g	0 %		
Carbohydrate / Glucides 0 g	0 %	Fibre / Fibres 0 g	0 %
Sugars / Sucres 0 g	0 %		
Protein / Protéines 7 g			
Cholesterol / Cholestérol 15 mg			
Sodium 120 mg	5 %		
Potassium 75 mg	2 %		
Calcium 0 mg	0 %		
Iron / Fer 1 mg	6 %		

SF04695

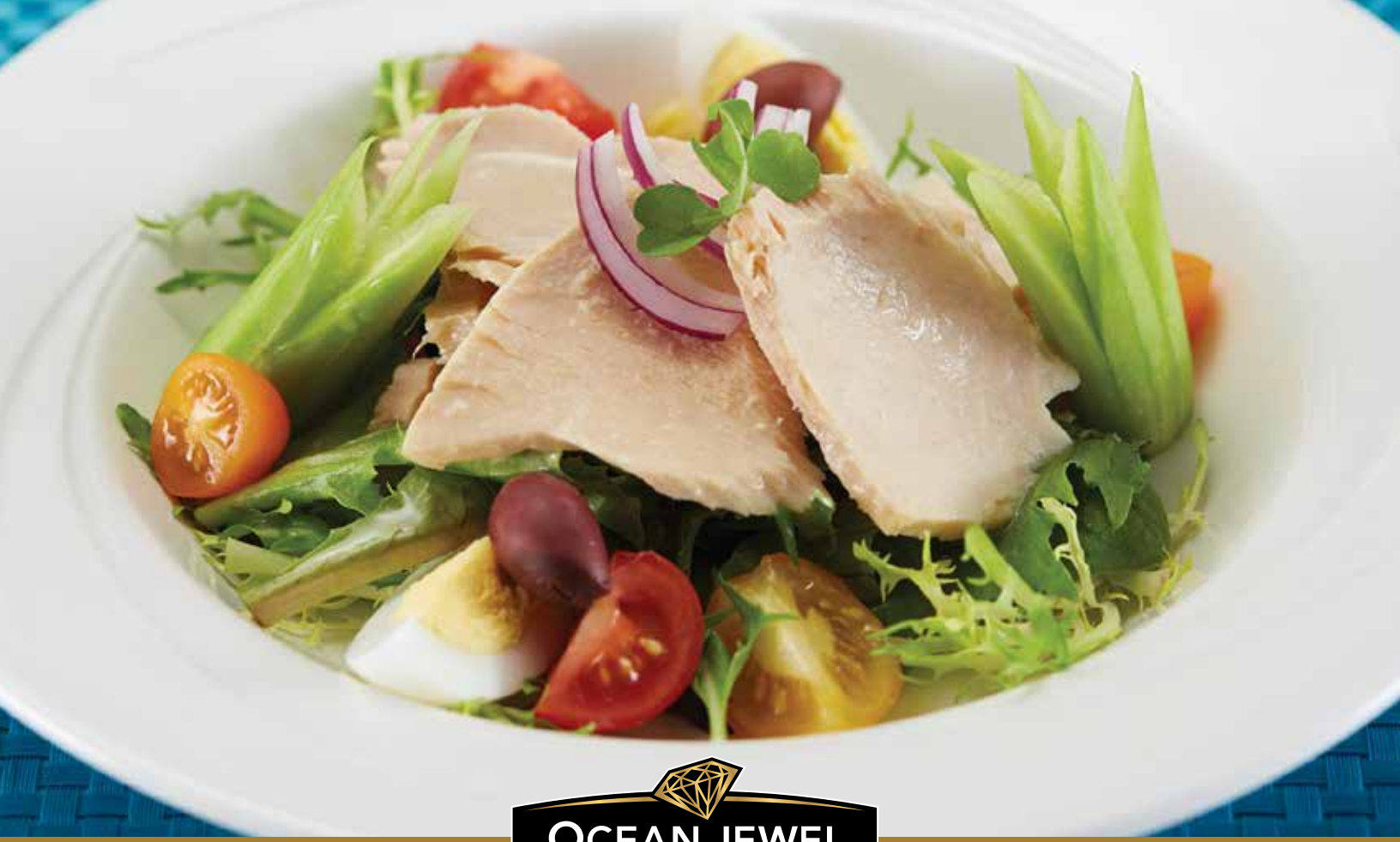
Nutrition Facts		Valeur nutritive	
Per about 1/4 cup (55 g)		pour environ 1/4 tasse (55 g)	
<b>Calories 60</b>			
Fat / Lipides 0.5 g	1 %	Saturated / saturés 0 g	0 %
+ Trans / trans 0 g	0 %		
Carbohydrate / Glucides 1 g	0 %	Fibre / Fibres 0 g	0 %
Sugars / Sucres 0 g	0 %		
Protein / Protéines 13 g			
Cholesterol / Cholestérol 15 mg			
Sodium 170 mg	7 %		
Potassium 150 mg	3 %		
Calcium 10 mg	1 %		
Iron / Fer 0.4 mg	2 %		

SF05006

Nutrition Facts		Valeur nutritive	
Per about 1/4 cup (55 g)		pour environ 1/4 tasse (55 g)	
<b>Calories 60</b>			
Fat / Lipides 0.5 g	1 %	Saturated / saturés 0 g	0 %
+ Trans / trans 0 g	0 %		
Carbohydrate / Glucides 1 g	0 %	Fibre / Fibres 0 g	0 %
Sugars / Sucres 0 g	0 %		
Protein / Protéines 13 g			
Cholesterol / Cholestérol 15 mg			
Sodium 140 mg	6 %		
Potassium 175 mg	4 %		
Calcium 10 mg	1 %		
Iron / Fer 0.2 mg	1 %		

SF05007

Code	SCC Code	Description	Count/Size	Origin	Brand	Pack	Size
SF04695	30059371806781	Pink Salmon Flake RTE K	500 g	Thailand	Ocean Jewel	12 x 500 g	6.00 kg
SF05006	30059371809560	Skipjack Tuna Flaked Loins	1.22 kg	Vietnam	Ocean Jewel	6 x 1.22 kg	7.31 kg
SF05007	30059371809577	Albacore Tuna Flaked Loins	1.22 kg	Vietnam	Ocean Jewel	6 x 1.22 kg	7.31 kg



# Canned Fish

**Ocean Jewel™** Canned Salmon and Tuna is the starting point for delicious, convenient meals. We offer a variety of species with a range of price points.

- HIGHLIGHTS:**
- Available in Pink or Sockeye Salmon, and Albacore or Skipjack Tuna
  - Easy to store on a shelf in a cool, dry place
  - Excellent source of protein

**CHEF'S TIP:** Add to a salad, in a casserole, sandwich, cakes or on a crostini

Nutrition Facts		Valeur nutritive	
Per about 1/4 cup (55 g) pour environ 1/4 tasse (55 g)			
<b>Calories 90</b>			
Fat / Lipides 2.5 g	3 %	% Daily Value*	
Saturated / saturés 0.5 g	3 %	% valeur quotidienne**	
+ Trans / trans 0 g			
Carbohydrate / Glucides 0 g			
Fibre / Fibres 0 g	0 %		
Sugars / Sucres 0 g	0 %		
Protein / Protéines 16 g			
Cholesterol / Cholestérol 20 mg			
Sodium 290 mg	13 %		
Potassium 175 mg	4 %		
Calcium 0 mg	0 %		
Iron / Fer 0.2 mg	1 %		
*5% or less is a little, 15% or more is a lot			
**5% ou moins c'est peu, 15% ou plus c'est beaucoup			

SF00976

Nutrition Facts		Valeur nutritive	
Per about 1/4 cup (55 g) pour environ 1/4 tasse (55 g)			
<b>Calories 60</b>			
Fat / Lipides 0.5 g	1 %	% Daily Value*	
Saturated / saturés 0 g	0 %	% valeur quotidienne**	
+ Trans / trans 0 g			
Carbohydrate / Glucides 0 g			
Fibre / Fibres 0 g	0 %		
Sugars / Sucres 0 g	0 %		
Protein / Protéines 15 g			
Cholesterol / Cholestérol 30 mg			
Sodium 260 mg	11 %		
Potassium 125 mg	3 %		
Calcium 0 mg	0 %		
Iron / Fer 0.5 mg	3 %		
*5% or less is a little, 15% or more is a lot			
**5% ou moins c'est peu, 15% ou plus c'est beaucoup			

SF02770



Nutrition Facts		Valeur nutritive	
Per about 1/4 cup (55 g) pour environ 1/4 tasse (55 g)			
<b>Calories 60</b>			
Fat / Lipides 0 g	0 %	% Daily Value*	
Saturated / saturés 0 g	0 %	% valeur quotidienne**	
+ Trans / trans 0 g			
Carbohydrate / Glucides 0 g			
Fibre / Fibres 0 g	0 %		
Sugars / Sucres 0 g	0 %		
Protein / Protéines 14 g			
Cholesterol / Cholestérol 30 mg			
Sodium 210 mg	9 %		
Potassium 125 mg	3 %		
Calcium 0 mg	0 %		
Iron / Fer 0.2 mg	1 %		
*5% or less is a little, 15% or more is a lot			
**5% ou moins c'est peu, 15% ou plus c'est beaucoup			

SF03140

Code	SCC Code	Description	Count/Size	Origin	Brand	Pack	Size
SF00976	30059371402259	Albacore Tuna Solid RTE OU	1.88 kg	Thailand	Ocean Jewel	6 x 1.88 kg	11.28 kg
SF02770	30059371775094	Skipjack Tuna Chunk Light OU	1.88 kg	Thailand	Ocean Jewel	6 x 1.88 kg	11.28 kg
SF03140	30059371781965	Tongol Tuna Chunk Light OU	1.88 kg	Thailand	Ocean Jewel	6 x 1.88 kg	11.28 kg



# POUCHPAK™ & CANNED FISH

## PouchPak™ Fish

Code	SCC Code	Description	Count/Size	Origin	Brand	Pack	Size
SF04695	30059371806781	Pink Salmon Flake RTE K	500 g	Thailand	Ocean Jewel	12 x 500 g	6.00 kg
SF05006	30059371809560	Skipjack Tuna Flaked Loins	1.22 kg	Vietnam	Ocean Jewel	6 x 1.22 kg	7.31 kg
SF05007	30059371809577	Albacore Tuna Flaked Loins	1.22 kg	Vietnam	Ocean Jewel	6 x 1.22 kg	7.31 kg

## Canned Fish

Code	SCC Code	Description	Count/Size	Origin	Brand	Pack	Size
SF00976	30059371402259	Albacore Tuna Solid RTE OU	1.88 kg	Thailand	Ocean Jewel	6 x 1.88 kg	11.28 kg
SF02770	30059371775094	Skipjack Tuna Chunk Light OU	1.88 kg	Thailand	Ocean Jewel	6 x 1.88 kg	11.28 kg
SF03140	30059371781965	Tongol Tuna Chunk Light OU	1.88 kg	Thailand	Ocean Jewel	6 x 1.88 kg	11.28 kg

RTE - Ready To Eat, K - Triangle K Kosher Certified, OU - Orthodox Union Kosher Certified



Let's talk about growing your business!

Head Office: 905-792-9700

[exportpackers.com/foodservice](http://exportpackers.com/foodservice)